



MAESTRO

Incident Management Platform

**Bridging the Gap
in Emergency
Response**



Dr. Georgios Kioumourtzis
CEO, IANUS Technologies Ltd
gk@ianus-technologies.com



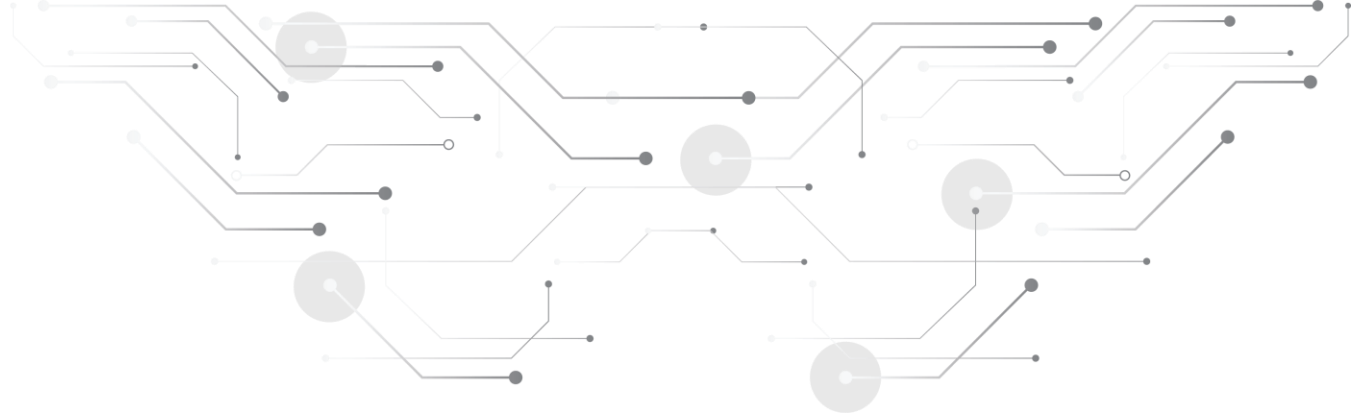
Structure



- The company
- Introduction
- Concept
- Key value points
- Features
- Architecture
- Application areas
- Future roadmap



About IANUS



IANUS Technologies Ltd conducts research and develops innovative technology solutions in the Security, Cyber Security and Defense sectors. It actively engages in the preparation and management of EU and National projects.

IANUS' [Vision](#) is to provide Innovative solutions in the Field of Operations.

"The secret to getting ahead is getting started."

- Mark Twain -




Introduction

MAESTRO is an incident management platform, which is fully customized to meet the needs of our customers. Defense Forces and Civil Security Agencies such as Police, Firefighters, Emergency Medical Teams and First Responders are provided with an array of tools and technologies which ensure their operational efficiency and effectiveness, strengthening their operational capabilities to the highest extent.



Concept

- Starting as an ambition to provide a real Command, Control, and Information platform with Common Operational Picture (COP) capabilities to First Responders (FRs) in the field.
- Based on IFAFRI's identified capability gaps.
- Understanding the value of real time information flow between the FRs in the field and the C2 center.
- An outcome of the EU research project. The logo for the RESPOND-A project. It features the word "RESPOND-A" in red capital letters, with each letter inside a red hexagon. Above the letters are four icons: a blue triangle, a black star, a red flame, and a blue shield. Below the letters are five icons: a red shield, a red camera, a red megaphone, a red radio, and a red fire.
- Tested and evaluated in several demonstrations (TRL 7).
- Continuous development cycles with FRs.










Key value points

- Designed and developed in-house by IANUS. Full ownership of IPRs, Cyprus product.
- Co-development with several FRs with the Cyprus Fire Service being the primary end-user.
- Embraced by the Cyprus Fire Service in several live field demonstrations.
- Continuous upgrades to provide SOTA functionalities.

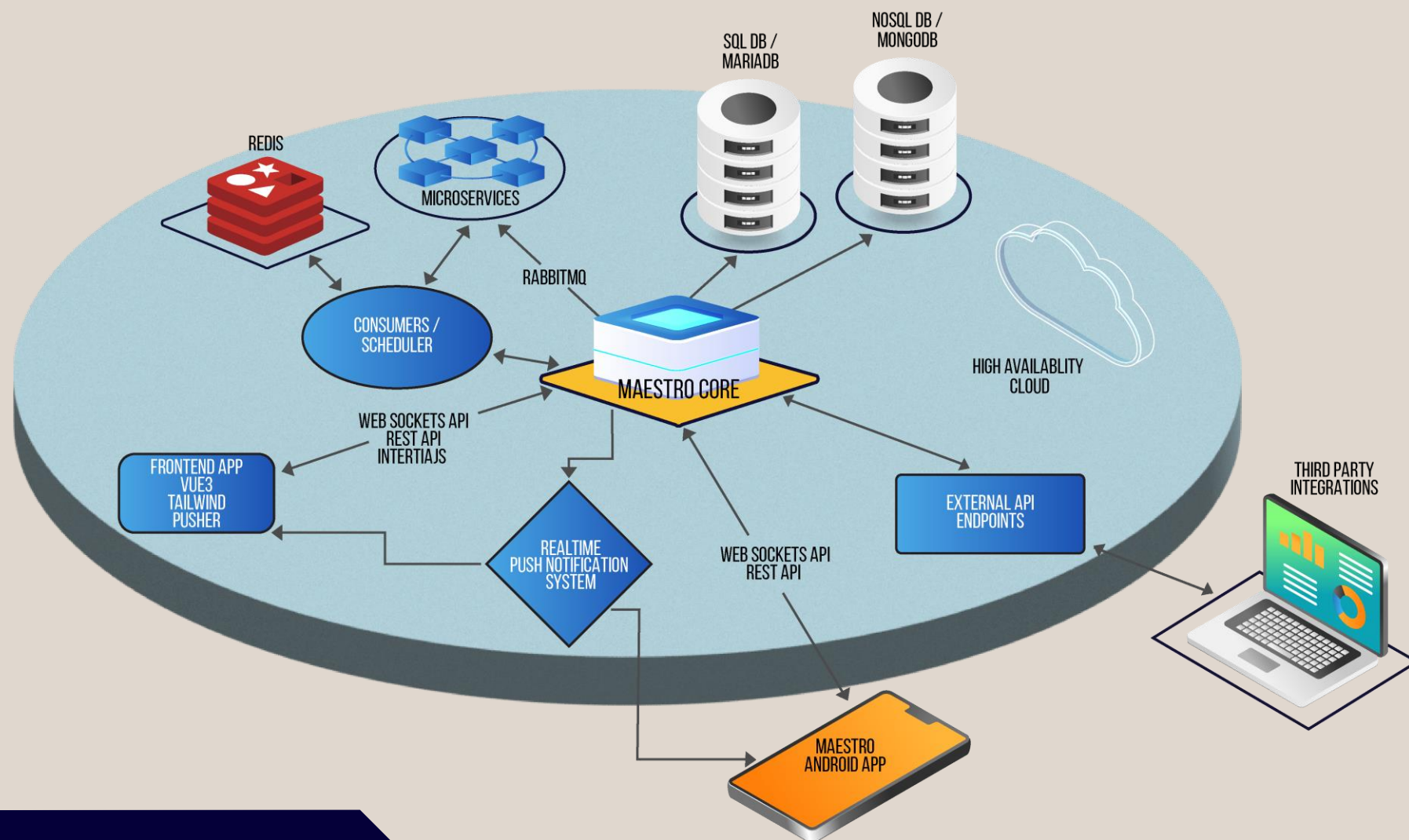


Features

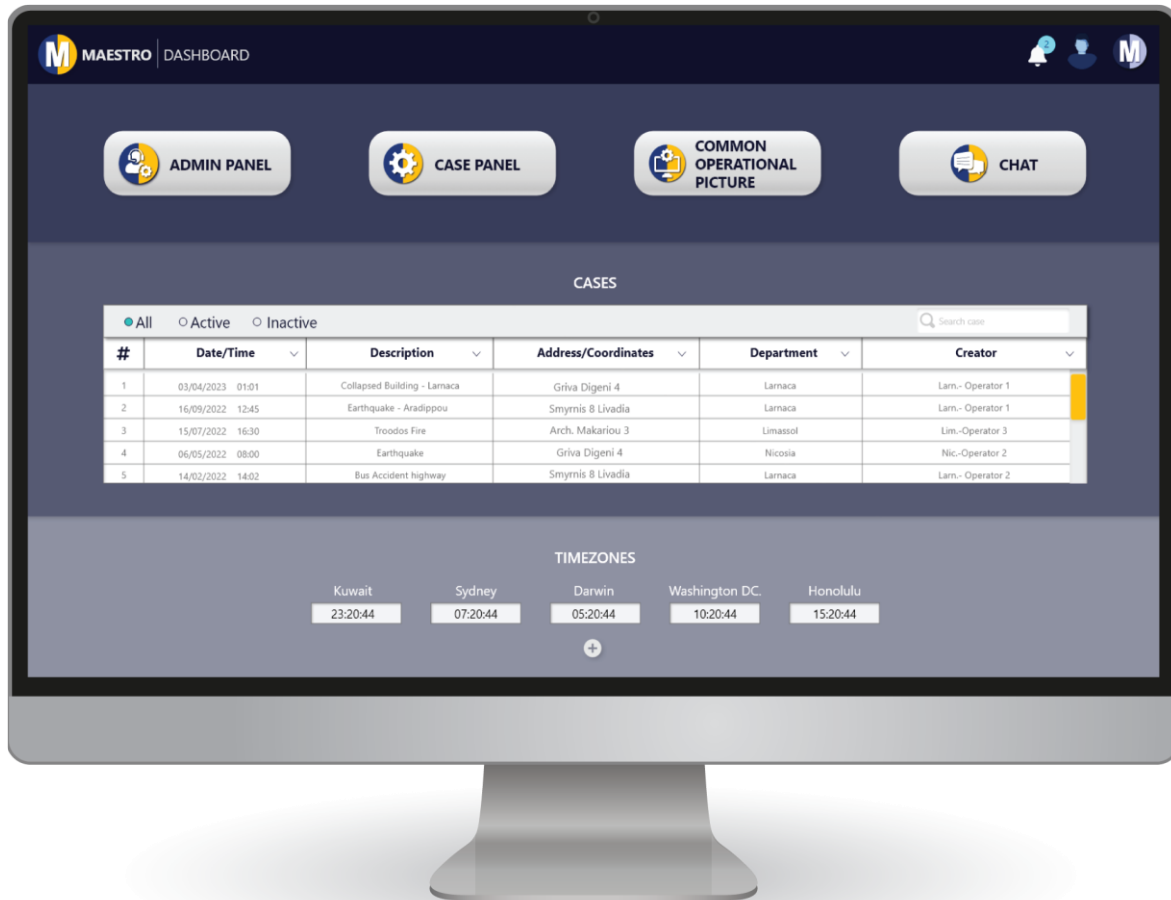
-  Modular software based on open architecture.
-  Operation in all echelon levels (local, regional, national).
-  Easy to use with smart and user-friendly interface.
-  Especially designed to be adaptable to all first responders' services.
-  Covering current identified gaps of C2 tools.
-  A perfect tool for training, planning, and managing incidents.
-  Deployment on cloud (private or public)



MAESTRO Architecture



Maestro Dashboard

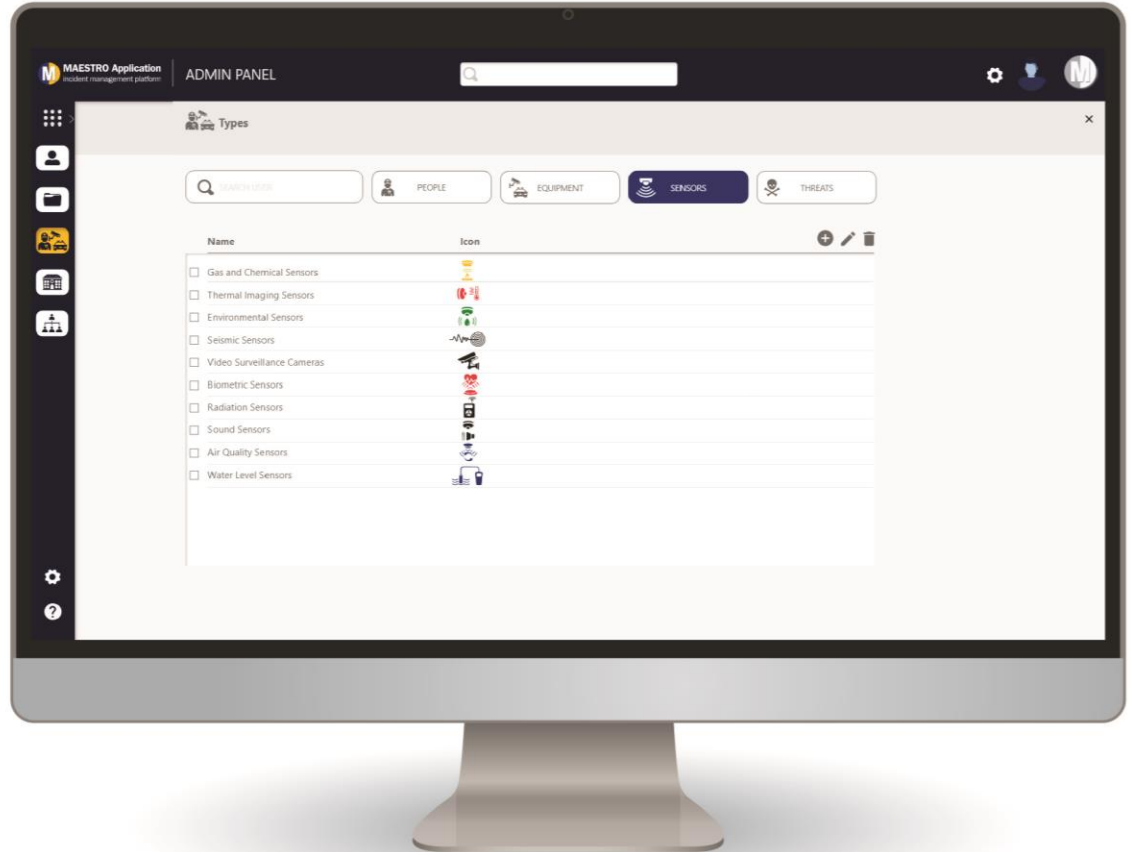


- Departments, users, equipment, fleet, duty roster, access rights etc.)
- Case management
- Common Operational Picture
- Chat services
- Third party (sensors network, cameras, CBRN sensors, UAV video streaming, etc.)



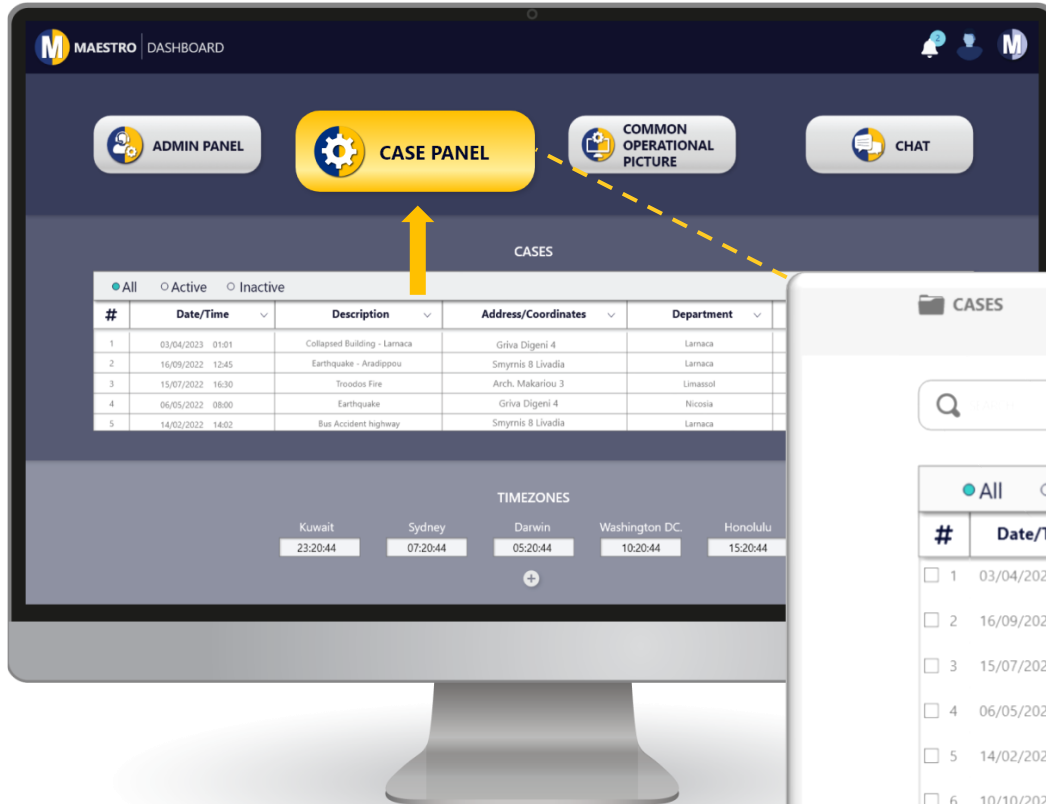
Resource Management

- Administrator dashboard for resource management
- Manages First Responders, materials, machinery, equipment, and fleet
- Covers any other resources required for missions
- Ensures effective use of internal and external resources
- Optimizes mission accomplishment and resource allocation

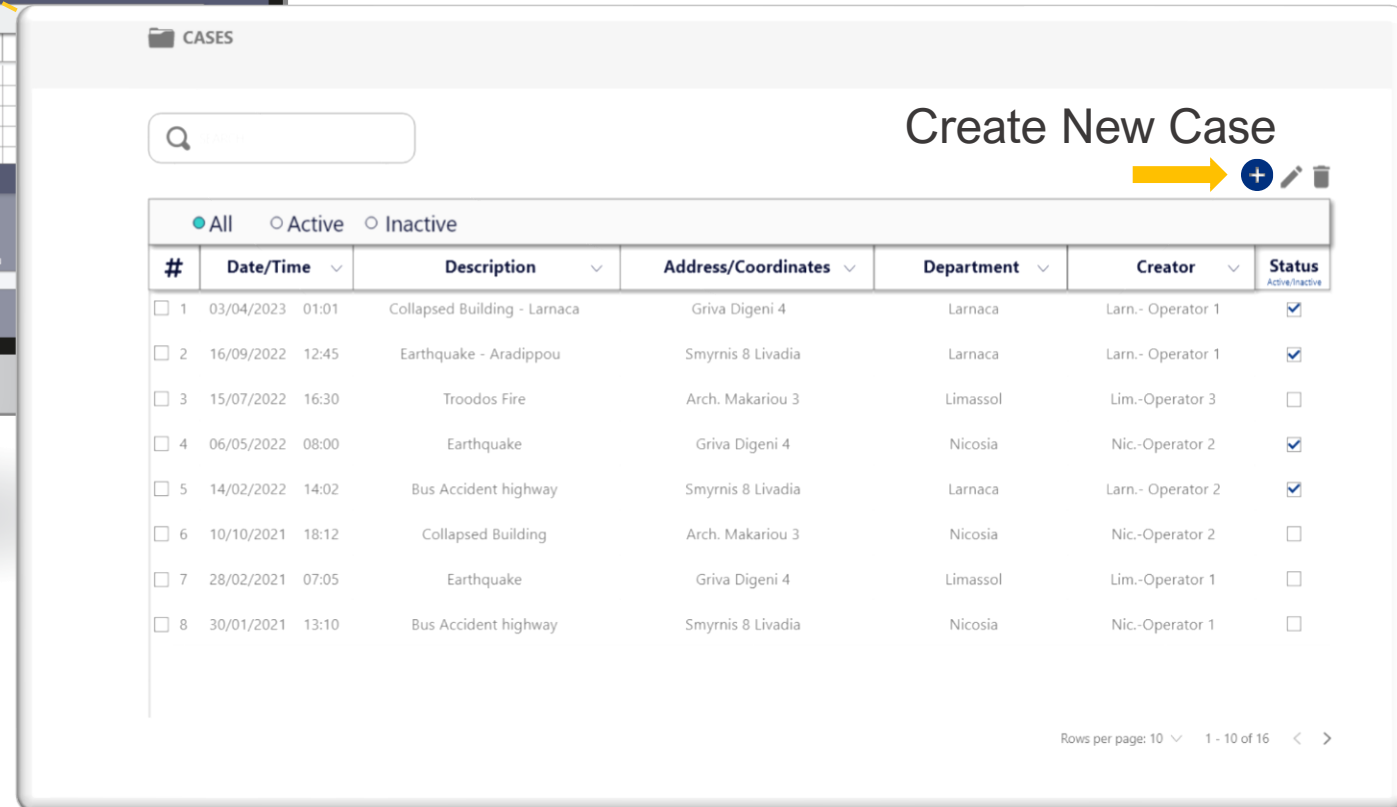


Creating a New case

Dashboard



Cases Panel



Creating a New case

Cases Panel

Auto Generated Case number

#	Date/Time	ID	Description
1	03/04/2023 01:01	0263	Bur
2	16/09/2022 12:45	9842	Co

Case Department

- Limassol
- Larnaca
- Nicosia
- Paphos

Case Location

Case Leader

- John Doe - fr1
- Dora Pambis - fr2
- Antria Hadji - police1
- John Doe - fr1
- Dora Pambis - fr2
- Antria Hadji - police1
- John Doe - fr1
- Dora Pambis - fr2

Case Description & Details

New Case

CaseID: A001587

*Title:

*Address:

Coordinates: Latitude: 00.00000 Longitude: 00.00000

*Department:

Assign Leader to Case:

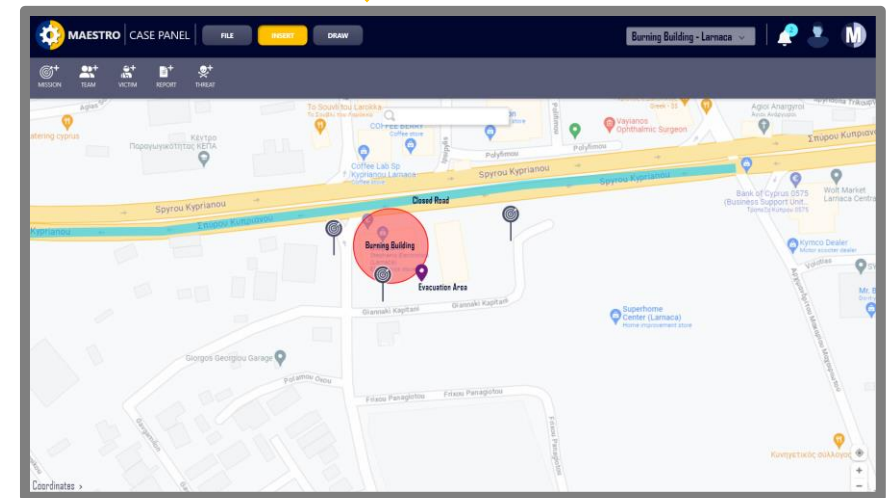
*Description:

Active: ☐

Cancel Save

Created Case

#	Date/Time	ID	Description	Address/Coordinates	Department	Creator	Status
1	16/09/2022 12:45	9842	Burning Building - Larnaca	Griva Digeni 4	Larnaca	Larn-Operator 1	Active
2	16/09/2022 12:45	9842	Collapsed Building - Larnaca	Spyrou Kyprianou	Larnaca	Larn-Operator 1	Active
3	15/07/2022 16:30	1254	Troodos Fire	Arch. Makariou 3	Limassol	Lim-Operator 3	Active
4	06/05/2022 08:00	1764	Earthquake	Griva Digeni 4	Nicosia	Nic-Operator 2	Active
5	14/02/2022 14:02	2348	Bus Accident highway	Smyrnis 8 Livadia	Larnaca	Larn-Operator 2	Active
6	10/10/2021 18:12	3941	Collapsed Building	Arch. Makariou 3	Nicosia	Nic-Operator 2	Active
7	28/02/2021 07:05	0289	Earthquake	Griva Digeni 4	Limassol	Lim-Operator 1	Active
8	30/01/2021 13:10	0017	Bus Accident highway	Smyrnis 8 Livadia	Nicosia	Nic-Operator 1	Active



Case Panel

Import Threat

Select Threat 

Location

Description

Save Cancel

ADD ON MAP

MAP OVERLAY

MAP ELEMENTS

Burning Building

Evacuation Area

Closed Road

MAESTRO CASE PANEL

FILE INSERT DRAW

Burning Building - Larnaca

MISSION TEAM VICTIM REPORT THREAT

ADD VICTIM

Name

Coordinates

Latitude: 00.00000 Longitude: 00.00000

Address

Triage State

EMERGENCY

URGENT

ROUTINE

Cancel Create

- Case management
- Mission management
- Assign users and equipment
- Notification of hazards
- Notification of threats
- Victims
- Alerts

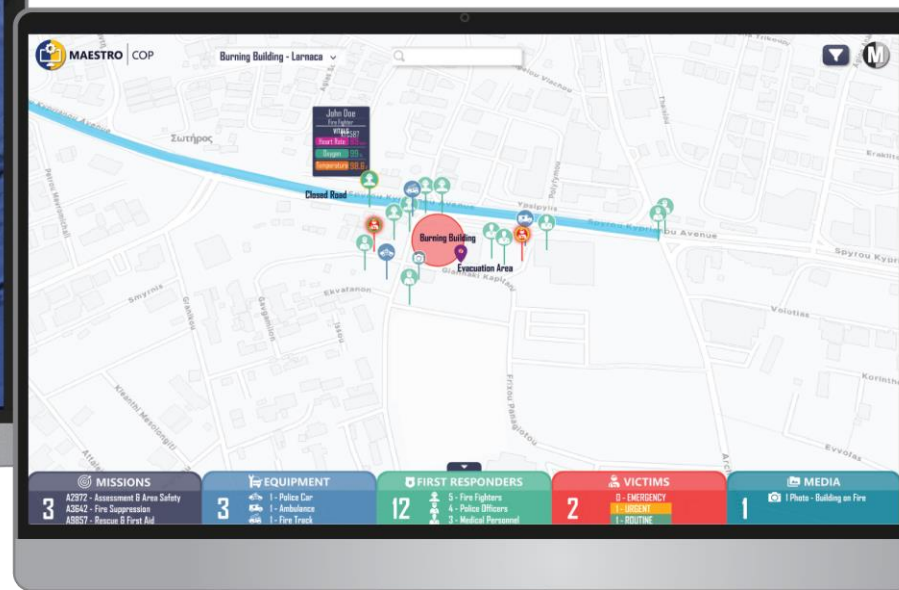


Operational Center

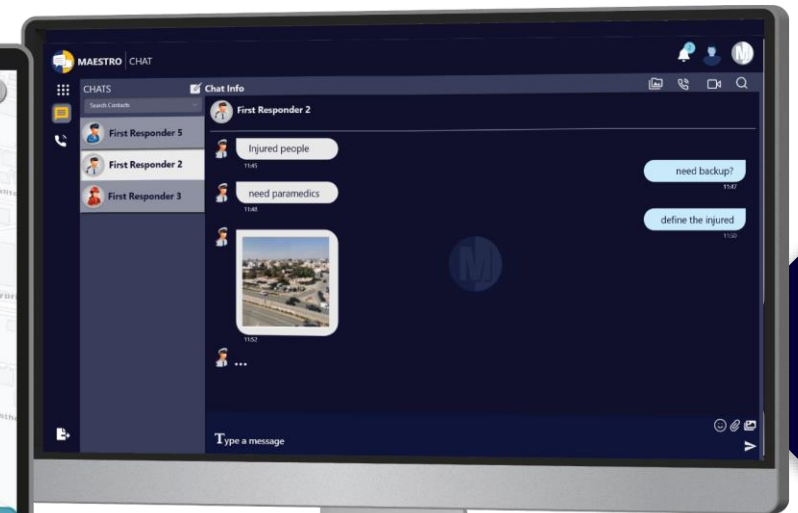
Country View



Case View



Chat



MAESTRO in action - National level



Common Operational Picture

Main Tabs

3 MISSIONS

- A2972 - Assessment & Area Safety
- A3642 - Fire Suppression
- A9857 - Rescue & First Aid

3 EQUIPMENT

- 1 - Police Car
- 1 - Ambulance
- 1 - Fire Truck

12 FIRST RESPONDERS

- 5 - Fire Fighters
- 4 - Police Officers
- 3 - Medical Personnel

2 VICTIMS

- 0 - EMERGENCY
- 1 - URGENT
- 1 - ROUTINE

1 MEDIA

- 1 Photo - Building on Fire

First Responder Vitals

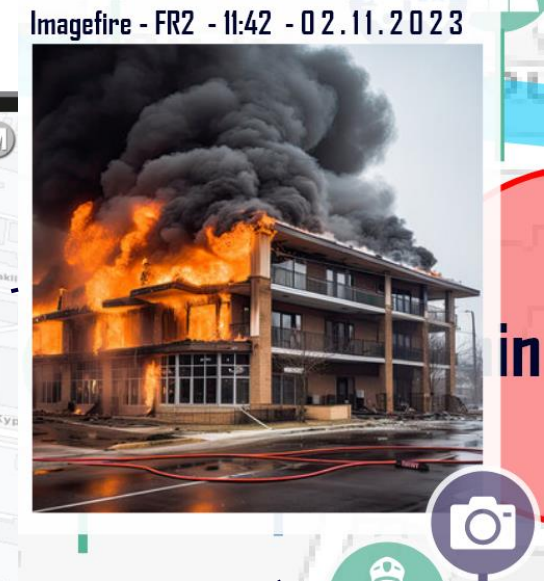
John Doe
Fire Fighter

VITALS

- Heart Rate **89** bpm
- Oxygen **99** %
- Temperature **98.6** F

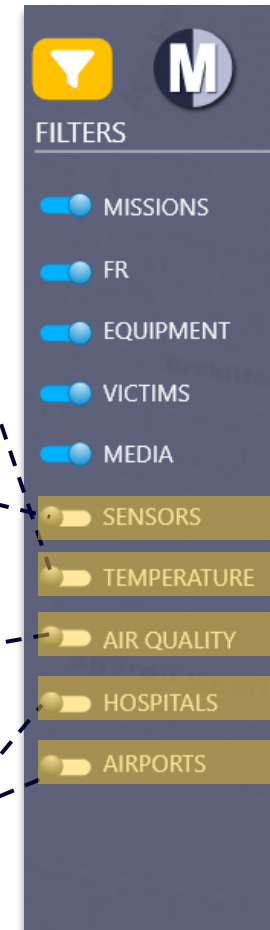
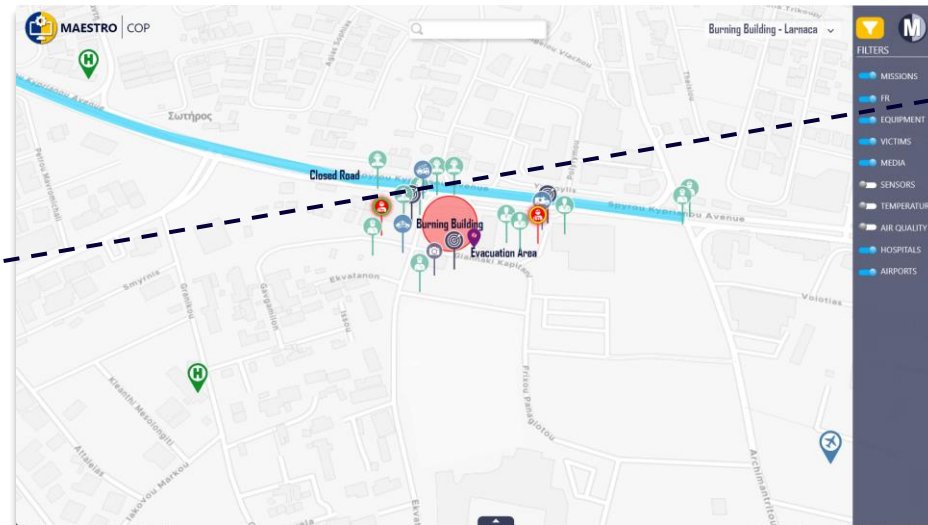
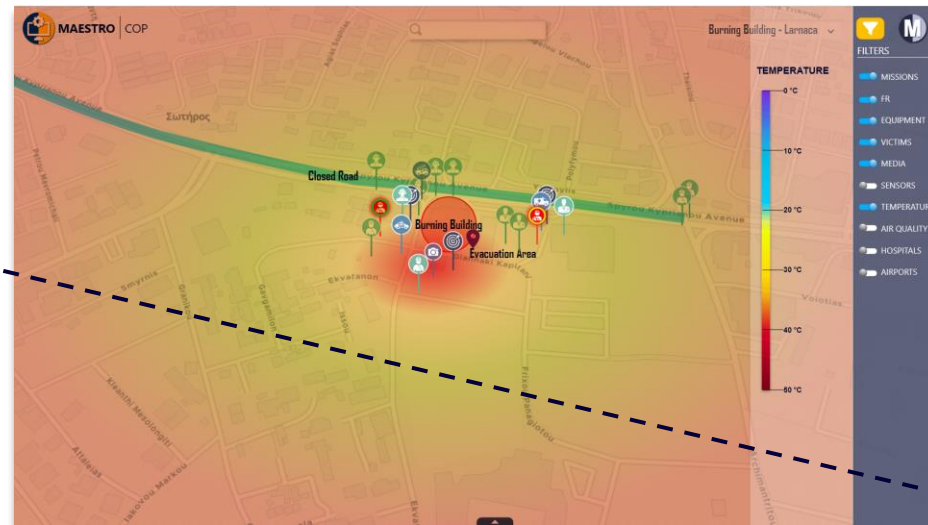
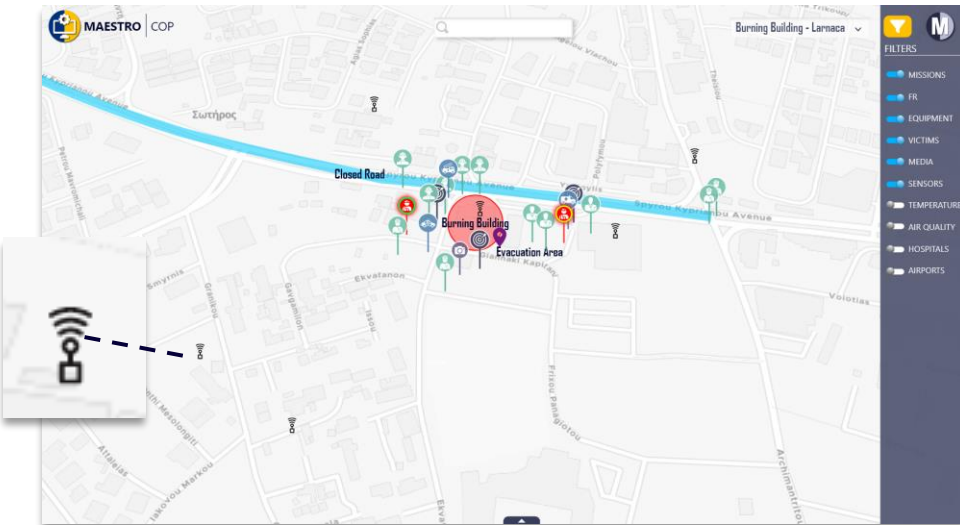


Image Preview

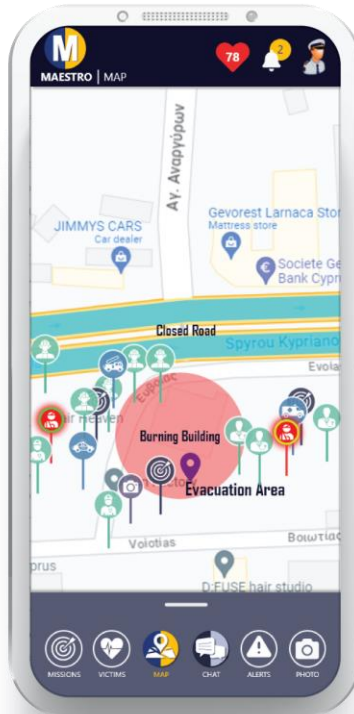


Common Operational Picture

Map Filters



Real Time Data Exchange



Mobile Application (Android)

- Enables on-the-go access to crucial incident information for first responders
- Real-Time communication with Command-and-Control Centre



WEBAPP

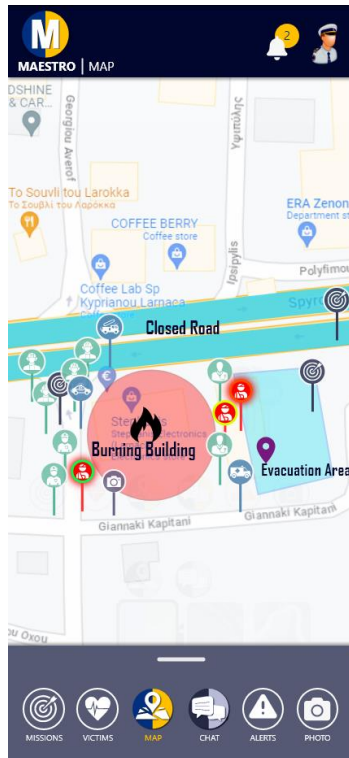
- Central hub for managing and coordinating emergency response operations
- A user-friendly interface and easy accessibility



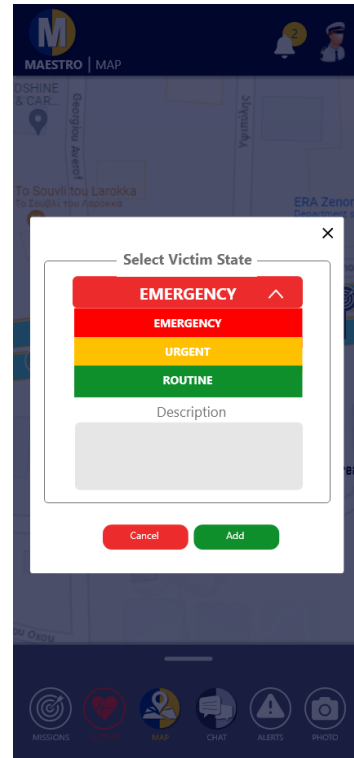
MAESTRO Mobile App



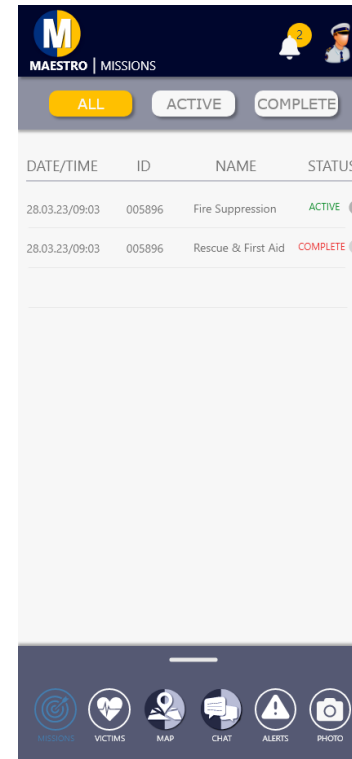
LOG IN



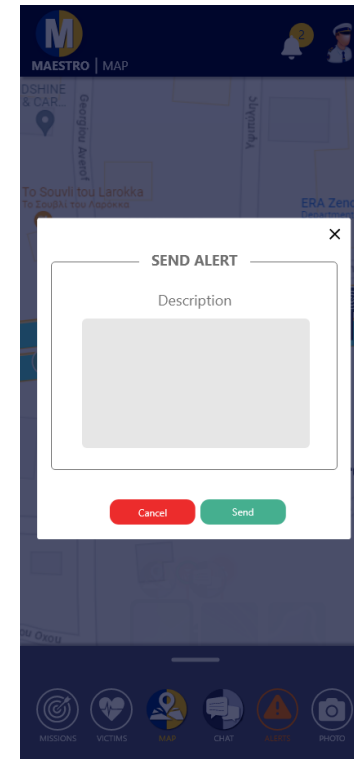
MAP - CASE



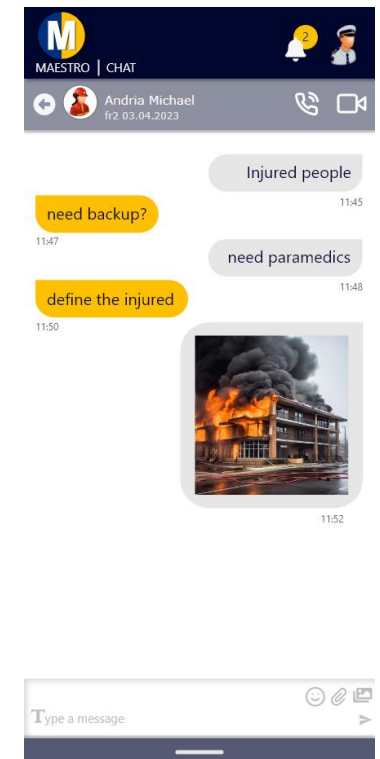
ADD VICTIM



VIEW MISSION



SEND ALERT



CHAT



Future Roadmap and Next Steps

Enhancements to further empower first responders and defense agencies

Integrating advanced AI capabilities for predictive analytics and optimizing resource allocation.

Exploring opportunities to extend MAESTRO's application in the defense sector, enabling our platform to bolster national security and emergency preparedness.



Contact



Cyprus Offices

📍 Spyrou Kyprianou 85, Eleneio Megaro, Larnaca, 6051

☎ (+357) 24723131

📠 (+357) 24724141



Greece Offices

📍 Panepistimiou 56, Athens 10678, Greece

☎ (+30) 2110016529

✉ info@ianus-technologies.com

🌐 www.ianus-technologies.com

in X 📺 @IanusTechnologies

